

## General Remarks related to the Bank App2App implementation

May 2021

- The Bank provides TPPs with an App2App flow for both iOS and Android.
- This flow must be implemented by TPPs who provides PSUs with Mobile Applications which allow consents creation and/or payments initiation.
- The Mobile App provided by the Bank is "**Eurobank Lux Banking**".
  - Available on Apple App Store at:  
<https://apps.apple.com/us/app/eurobank-lux-banking/id1473957458>  
(This URL is subject to change without prior notice).
  - Available on Android Google Play at:  
<https://play.google.com/store/apps/details?id=lu.eurobankpblux.ebanking&hl=en&gl=US>  
(This URL is subject to change without prior notice).

To enable and leverage on the Bank App2App flow, there is only two changes to perform at TPP level.

As a TPP, when you will create a resource either (*Initial step*):

- **a consent** – for example:  
POST <https://erbklull-psd2api.luxhub.com/bg/v1/consents>
- **or a payment** – for example:  
POST <https://erbklull-psd2api.luxhub.com/bg/v1/payments/standard-credit-transfers>

Then you will create the related authorisation(s) (*step 2*):

- **on a consent** – for example:  
POST <https://erbklull-psd2api.luxhub.com/bg/v1/consents/{consentId}/authorisations>
- **or on a payment** – for example:  
POST <https://erbklull-psd2api.luxhub.com/bg/v1/payments/standard-credit-transfers/{paymentId}/authorisations>

### CHANGE #1 (*initial step & step 2*)

The header "TPP\_REDIRECT\_URI" becomes mandatory.

You will have to provide the Bank with universal link related to the TPP App in this header.

You will have to request the authorise endpoint, as per the following examples (*step 6*):

- **for a consent** – performing the following call (cf. Luxhub documentation for additional details):  
GET [https://erbklull-psd2api.luxhub.com/api/oauth/authorize?response\\_type=code&scope=AIS%3A{consentId}%20AIS\\_EXT&client\\_id={TppApplicationId}&redirect\\_uri={TPP\\_Redirect\\_URI}&state={generatedState}&code\\_challenge={code\\_challenge}&code\\_challenge\\_method=S256&resource={authorisationId}](https://erbklull-psd2api.luxhub.com/api/oauth/authorize?response_type=code&scope=AIS%3A{consentId}%20AIS_EXT&client_id={TppApplicationId}&redirect_uri={TPP_Redirect_URI}&state={generatedState}&code_challenge={code_challenge}&code_challenge_method=S256&resource={authorisationId})

- **for a payment** – performing the following call (cf. Luxhub documentation for additional details):  
GET https://erbklull-psd2api.luxhub.com/api/oauth/authorize?response\_type=code&scope=PIS%3A{paymentId}&client\_id={TppApplicationId}&redirect\_uri={TPP\_Redirect\_URI}&state={generatedState}&code\_challenge={PKCE\_code\_challenge}&code\_challenge\_method=S256&resource={authorisationId}

In return, a form auto-submit will be received, for example:

```
<html>
<body onload="document.forms['form1'].submit();">
<h1>Redirecting to https://access.eurobankpb.lu/xs2a/sca Authentication Server</h1>
<form id="form1" action="https://access.eurobankpb.lu/xs2a/sca" method="POST">
  <input name="callback_uri" type="hidden" value="https://erbklull-cb.luxhub.com/api/oauth/callback" />
  <input name="LH_token" type="hidden" value="{JWT_TOKEN}" />
</form>
</body>
</html>
```

## CHANGE #2 (steps 10 & 11)

You will have to:

1. Prevent the redirection triggered by this form
2. Extract the following information contained in it:
  - The **Bank universal link**: <https://access.eurobankpb.lu/xs2a-app2app/sca>
  - The **callback\_uri** present in the form "input"
  - The **LH\_token** present in the form "input"
3. Create the following request to provide the Bank with the related information. For example:  
GET {Bank universal link}?callback\_uri={callback\_uri}&LH\_token={LH\_token}

Finally, [step 30] the following call will be emitted from the Bank instead of Luxhub toward the TPP:

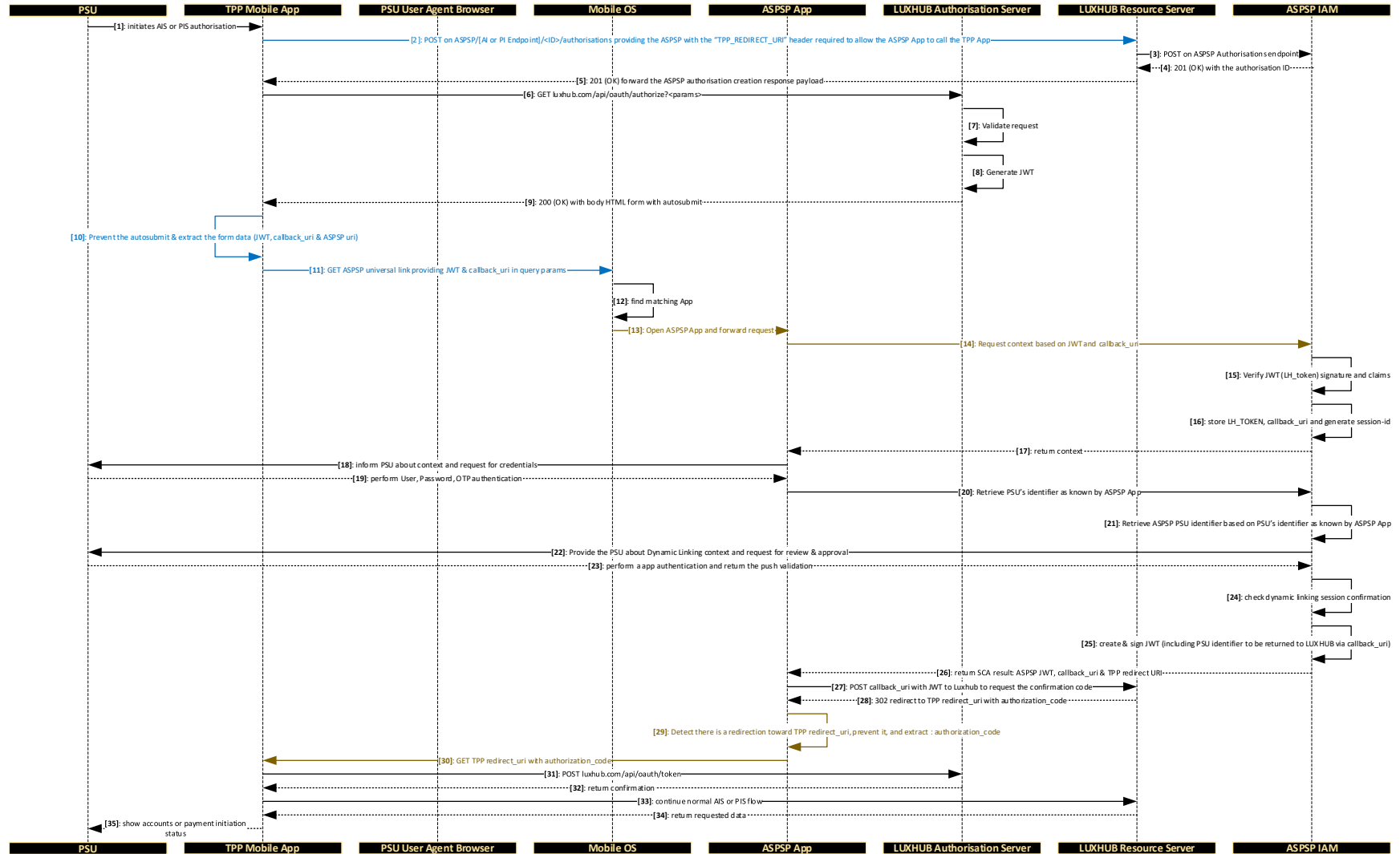
```
GET {TPP_Redirect_URI}?code={authorization_code}&state={state}
```

The rest of the flow is unchanged from a TPP perspective (cf. *The Network Flow overview below*).

For more details regarding:

- [The Bank Main Berlin Group Swagger](#) & [The Bank CBPII Extension Berlin Group Swagger](#)
- [Additional information regarding the Bank implementation and Supported Flows](#)
- [LUXHUB - Get Started – Website](#) & [Send email to LUXHUB - Get Started](#)
- [Full Berlin Group Documentation of NextGenPSD2 Access to Account Interoperability Framework](#)

### Overview of the Network Flow when Leveraging on App2App Mechanism and Universal Link



→ : Common step    → (blue) : TPP step specific to App2App flow    → (yellow) : ASPSP step specific to App2App flow  
 → (dashed) : Call    → (dashed) : Response